

# EPOCH

# MARS

## GSP6G60M-380W

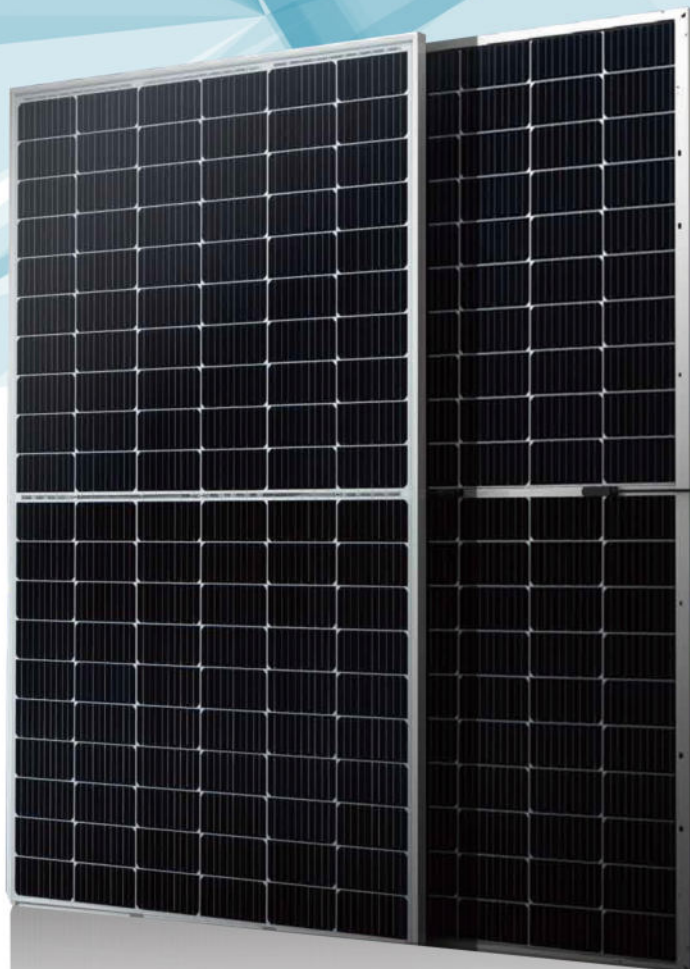
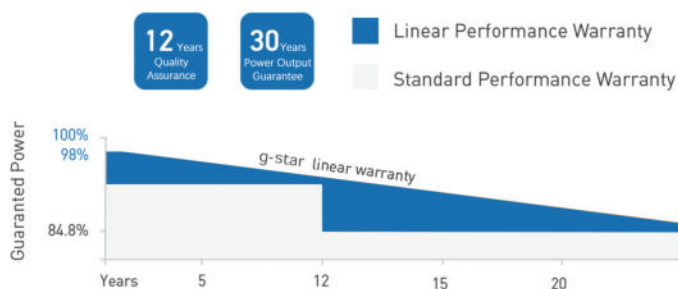
Bifacial  
9BB Half-cut Mono Perc

### SYSTEM & PRODUCT CERTIFICATES

- IEC 61215 / IEC 61730 / UL 61730
- ISO 9001: 2015 Quality Management System
- ISO 14001: 2015 Environment Management System
- ISO 45001: 2018 Occupational Health and Safety Management Systems



### PERFORMANCE WARRANTY



### KEY FEATURES



#### 9BB Half-cut Cell Technology

New circuit design, lower internal current, lower  $R_s$  loss  
Ga doped wafer, attenuation  $< 2\%$  (1st year) /  $\leq 0.45\%$  (Linear)



#### Industry Leading High Yield

Bifacial PERC cell technology,  
5%-25% more yield depends on different conditions



#### Excellent Anti-PID Performance

2 times of industry standard Anti-PID test



#### Wider Application

No water-permeability and high wear-resistance,  
can be widely used in high-humid, windy and dusty area



#### IP68 Junction Box

High waterproof level

# Electrical Characteristics

Testing Condition	STC	NMOT	STC	NMOT	STC	NMOT	STC	NMOT	STC	NMOT
Maximum Power(Pmax/W)	360	268	365	271	370	275	375	278	380	282
Operating Voltage (Vmpp/V)	34.3	31.6	34.6	31.9	34.9	32.1	35.2	32.3	35.5	32.6
Operating Current (Imp/A)	10.50	8.46	10.56	8.50	10.61	8.55	10.66	8.60	10.71	8.64
Open-Circuit Voltage (Voc/V)	40.7	37.9	40.9	38.0	41.1	38.2	41.3	38.4	41.5	38.6
Short-Circuit Current (Isc/A)	11.15	9.00	11.20	9.04	11.26	9.09	11.31	9.13	11.37	9.17
Module Efficiency[%]	19.80		20.00		20.30		20.60		20.90	

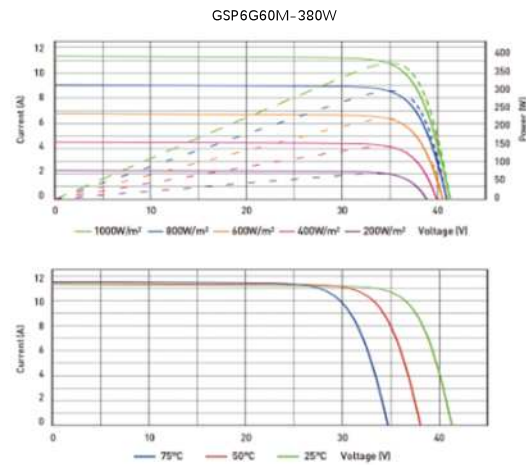
# Mechanical Characteristics

	5%	10%	15%	20%	25%
Pmax gain	5%	10%	15%	20%	25%
Pmax/W	394	413	431	450	469
Vmpp/V	35.2	35.2	35.2	35.2	35.2
Imp/A	11.19	11.73	12.26	12.79	13.33
VocV	41.3	41.3	41.3	41.3	41.3
Isc/A	11.88	12.44	13.01	13.57	14.14

# Mechanical Characteristics

Temperature Coefficient of Pmax	-0.36%/° C
Temperature Coefficient of Voc	-0.26%/° C
Temperature Coefficient of Isc	+0.043%/° C
Nominal Module Operating Temperature(NMOT)	43±2° C

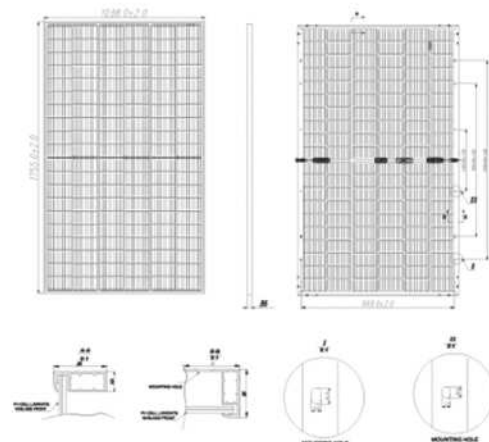
# I-V Curve



# Application Conditions

Cell Type	Monocrystalline
No. of Cells	120pcs in series (6*20)
Module Dimensions	1755*1038*35mm (69.09*40.87*1.38inches)
Weight	19.5kg(42.99lbs.)
Glass	3.2mm AR Coating Tempered Glass
Frame	Anodized Aluminium Alloy
Junction Box	IP68, 3 Bypass Diodes
Output Cables	4mm² (IEC), 12AWG(UL)300mm in Length or Customized Length
Connectors	MC4/MC4-EV02

# Technical Drawings



# Temperature Characteristics

Maximun System Voltage	1500V/DC
Operating Temperature	-40° C+85°
Maximun Series Fuse	25A
Safety Protection Class	ClassII
Mechanical Load	Front side 5400Pa Back side 2400Pa
Refer. Bifaciality Factor	70%±5%